

thrive

CHANGING LIVES
Event and fundraising ideas
Lend your support!

Get involved with our first
DAY OF GIVING

HELPING PEOPLE IN NEED
Read client stories

Charity
Link



Over the last 6 months...

With your support, we were able to provide the following essential items:



Household Goods

115



Cookers

635



Beds

341



Clothing

63



Fridge Freezers

415



Washing Machines

676

Frank's story

Frank is in his mid-sixties and suffers from profound deafness and learning disabilities.

He has been targeted by neighbours who have financially abused him so Frank is being helped to move to a new area.



Safeguarding measures have been put in place and Social Services will have appointeeship over his finances to help secure his future. This has been a very distressing and uncertain time for Frank.

On a low income from Universal Credit and Personal Independence Payments, Frank has been unable to replace the broken bed he sleeps on. He was referred to us by another charity for assistance with obtaining a new bed.

Thanks to your support, we've now been able to provide Frank with this vital item, helping him feel more comfortable in his new home after such an upsetting time.

Changing lives in need together

Charity Link ensures individuals and families in hardship across Leicestershire, Rutland and Northamptonshire are dry, warm, clean, safe and fed. We provide essential items like clothing, beds and white goods and in emergencies, help with food and utilities.

A £2.92 donation could buy a bed each year for someone like Frank.

We collaborate with 250 charities and organisations to deliver timely support and work in a unique way – unlocking funds from charitable trusts – which means we can turn every £10 you donate into £50 of essential items for those in need.

- 2**
Frank's story
- 3**
CEO's message
- 4**
Business and
PBS Club news
- 5**
Make a difference
- 6 & 7**
Thank you for the support
- 8**
Charity Link's Day
of Giving
- 9**
Kathleen's story
Ways you can get involved
- 10**
Trust Administration &
Service news
- 11**
Aaden's story
The Goods Depot

designeering

The Thrive newsletter is designed by Sébastien de La Hamayde from Designeering.

With over 25 years experience, Designeering gives clients a competitive edge through innovative design to increase their sales.

www.designeering.com

Charity Link

20a Millstone Lane
Leicester, LE1 5JN

0116 222 2200
info@charity-link.org

✕ @charitylink
f /charitylink
📷 @charity_link_official

www.charity-link.org

CEO's message

Welcome to the spring issue of Thrive.

I hope you enjoy reading about what we've been up to over what has been a very challenging winter period, but also in many ways, extremely positive and inspiring.

A huge number of people in hardship continue to need our help. The cost of living crisis hits those struggling on low incomes the hardest. It has not been an easy task to meet the need, as we face our own financial pressures, including rising costs and the loss or reduction of some income streams.

We remain passionate about offering a helping hand to people who find themselves in need for a huge variety of reasons, including being unable to work due to caring responsibilities or the impact of physical and mental health challenges.

I am so grateful to everyone who has lent their support to make a difference. Together we've changed 3,312 lives over the past six months. Amazing!

Would you consider getting involved in the coming weeks so that together we can help more people in need?

There are lots of ideas in this edition!

Sue McEniff
Chief Executive Officer



Businesses – we urgently need you!

We are keen to connect with more like-minded businesses across Leicestershire, Rutland and Northamptonshire to make an even greater impact in the community.



THERE ARE SO MANY WAYS GET INVOLVED...



Attend our business networking events

Enter a team for our Leicestershire 3 Peaks Challenge

Join our Proud Business Supporter Club



Staff fundraising or volunteering

Donate a prize

One off donation

Offer services in kind

Sponsor or support an event

Offer payroll giving

Get in touch to chat through ideas on how we can work together to change lives and support your company's Corporate Social Responsibility goals.

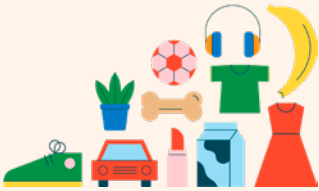
Interested in our regular business networking events?
Email hello@charity-link.org to be notified about the next one.

Proud Business Supporter Club

Join the PBS Club! There are three levels of membership (monthly donations of £20, £50 or £100) – all making a massive difference. We can turn every £10 donated into £50 of essential items for those in need. Find out more on our website.

Current members include:

Bawdon Lodge Farm, Better IT, Boolers, Church Pharmacy, Colourbank, Cunningtons Accountants, Full Square Print, K4 Law, Readings, Shoezone, Steven Mather Solicitor, Sturgess of Leicester, Beeston Clarke Accountants, Designeering, Kangaroo UK, Stoneygate Mortgages, & Karen Hall, Aims Accounting, Astral Sports Fitness, Executive Insight Exchange, ELHR Ltd, Gail Bradley Design, Homeshare Leicestershire, Holland Family Law, SLV Production, Soar Valley Press, Stowe Family Law, Strategy and Governance, Westcotes Wills, Women that Connect, Total Industrial Engraving.



Shop with Easyfundraising

We're on a mission to increase the number of supporters using the fantastic fundraising tool Easyfundraising. It's quick to register, easy to use, costs you nothing – but every time you shop we get a donation! 8,000 brands are listed, including supermarkets and popular high street chains. Visit www.easyfundraising.org.uk and sign up, picking Charity Link as your charity of choice!



Quizzers wanted!

Join us for a quiz night to help raise funds to support our work and the Rotary Club of Leicester on Thursday 26th June. The night will take place at Brookfield (University of Leicester) and we are looking for teams to test their knowledge. Refreshments provided and you can bring your own alcohol. Visit our website for more info.



Community Lottery

You can now support us through the Oadby and Wigston Community Lottery. Be in with the chance of winning cash prizes and help local people in need at the same time! We receive 50p from each £1 weekly ticket purchased and, due to our unique way of working, can turn that into £2.50 of essential items. Sign up via our website.



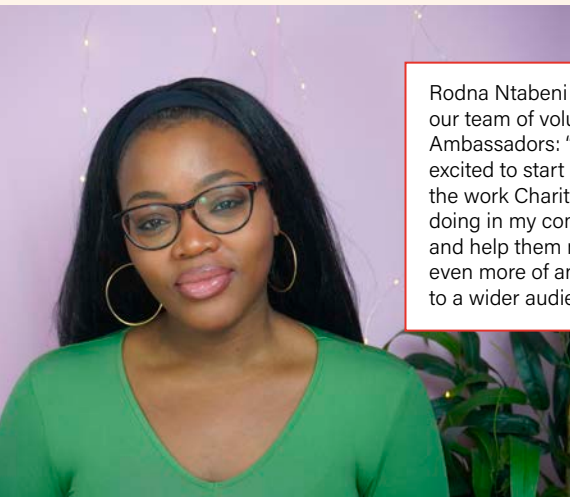
Curry night

Join us on Tuesday 3rd September for an 'all you can eat' curry at Chef and Spice in Leicester. This is a great way to support our work whilst enjoying a delicious range of starters, mains, sides and puddings. Tickets are a bargain at £20 and half of the cost goes directly to support our work. Book your place on our website now.

Thank you for the support!



During her year in office The Right Worshipful the Lord Mayor of Leicester, Councillor Dr Susan Barton, hosted a curry night, ran a bucket collection at De Montfort Hall and helped organise a stadium-to-stadium walk with United Leicester - a partnership of Leicestershire Cricket Club, Leicester City Football Club, Leicester Tiger Rugby Club, and Leicester Riders Basketball Club, helping to raise a considerable sum.



Rodna Ntabeni joined our team of volunteer Ambassadors: "I am excited to start sharing the work Charity Link are doing in my community and help them make even more of an impact to a wider audience".





Steven Mather Solicitor is our Leicestershire 3 Peaks finish line supporter again this year – helping to ensure we can give our amazing challengers the welcome home they deserve! See event advert on the back page.

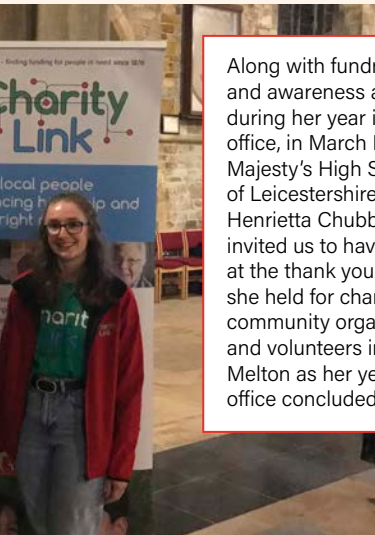


Sam and Lorraine joined Rachel from the team to walk over fire and glass to raise funds.

ACTS 435

Acts 435 helps to give to anyone who has a need across the UK. The organisation has enabled us to provide more essential items to clients by highlighting their stories to donors who have then generously given support.

Manchester Marathon stars! Paul McEniff completed in 4h14 and raised £545. Matthew Cox completed in 3h37 and raised £1,100.



Along with fundraising and awareness activities during her year in office, in March His Majesty's High Sheriff of Leicestershire, Mrs Henrietta Chubb, JP invited us to have a stand at the thank you event she held for charities, community organisations and volunteers in Melton as her year in office concluded.

Charity Link's Day of Giving

The day aims to bring the community together, to have fun, to focus ideas and enthusiasm – all to make a difference to people and children in need.

Research shows that those who support charity, get involved, and do things for others also reap the benefits... so feel passionate, powerful and positive – and decide what you can 'give' to make a difference.

It could be time, ideas, enthusiasm, money, skills. Friday 21st June is the day after the summer solstice, the longest day, so maybe some 'longest' theme fundraising is in order or run a dress up/down day at work.

The information sheet on our website will give you more ideas.



We need your support more than ever to meet the need we are experiencing during these tough times. But we also want you to feel part of our fantastic community. There are so many ways to get involved.

Whatever you can 'give' be part of this special day! Let us know what you are up to and share on social media. (#DayofGiving)

BE ONE OF OUR 75!

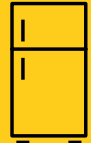
Whilst the day is not all about raising funds, we hope lots of fun fundraising will go on during the day. We are also looking for 75 supporters willing to donate £10 to help us provide:



5x



5x



5x

WILL YOU BE ONE OF OUR 75?

Scan the QR code to donate



GIVING THANKS! JOIN US FOR OUR THANK YOU EVENT

We couldn't make such a difference without all our supporters – and we want to show our appreciation!

On the eve of Charity Link's Day of Giving we'd love you to join us for a bubbly afternoon tea get-together.

Meet other supporters, referral partners and members of the Charity Link team and hear from our CEO and Chairman. Places are limited, so if you'd like to attend this event (between 4pm – 6pm) please email hello@charity-link.org

Thanks to our amazing business supporters who are helping us to run this event. See more on our website.

Kathleen's story

Kathleen is a single parent with three young children. The family were served with a 'no fault' eviction notice by their private landlord as he wanted to sell the property. This made the family homeless.

Kathleen moved into a hostel with her children for some time, but she has now been offered a permanent tenancy. Unable to work and relying on Universal Credit and Child Benefits, Kathleen is struggling to meet the cost of setting up her family's new home.

Kathleen was referred to us by a Support Officer seeking assistance towards the cost of a cooker and beds – items essential in helping to improve the family's wellbeing.



Thanks to your support, we have been able to provide the cooker and the beds for Kathleen's children, helping them to be warm, safe and fed in their new home.

A monthly gift of £5.42 could provide a cooker for a family in need each year.

Ways you can get involved...

Become a
Charity Link
Ambassador

Set up a regular gift

Join the local
community lottery

Ask your
local school
to take part
in fundraising
events

Nominate us for support at
your place of work, club or
local supermarket

A one-off donation

Organise a gift in your will

Organise your own
fundraising event
or challenge... or
support one of ours

Engage with
our social
media posts

Help spread the
word / distribute leaflets
and posters

Sign up to our
monthly e-newsletter

Payroll giving

Use easyfundraising when
shopping online

Tell us your ideas!

Trust Administration Service

Our hugely experienced Trust Administration Service team is responsible for offering clerkship, grant administration, management and consultancy services to other charities and not-for-profit organisations. Any profits from this service are fed back to support our core work.

Recently our Trust Administration Officer, Jackie Earl, has begun supporting Birmingham City University Students

Union, offering a clerkship service for the governing body, maintaining governance records and providing governance best practice advice. We are also conducting a full governance review for them as part of our consultancy services.

If you know a charity or not-for-profit organisation that could benefit from our services, visit the Trust Administration area of our website or call the office.

Service news

Our dedicated team works passionately to provide essential items to clients in need. We manage funds and apply on clients' behalf to charitable trusts and then purchase and deliver items that enhance health, wellbeing and dignity.

We continued our close association with both Leicester City and Leicestershire County Councils to support the distribution of the Household Support Fund until March. It was pleasing to see the Fund extended by six months in the Chancellor's spring budget.

This fund was set up to help those most in need to receive extra support from their local council for food, utilities and

essential items, many of which we have helped to provide, deliver, and install.

The team has also been busy developing a new client database which will help us to improve and streamline some of our processes going forward. The team is always keen to hear from referral partners for feedback on our service.

Work with vulnerable people?

Get in touch with our friendly team to find out how we can assist you and your clients.

MESSAGE FROM ONE OF OUR REFERRERS

“Charity Link has proven to be one of the greatest patrons of dignity and wellbeing for many families, single parents & children suffering a great deal of hardship including council taxes, lack of furniture, warmth, food and much more. In these times of cost of living crisis they have been the most important single charitable organisation & we hope they will continue to be supported to reach out to those suffering.”



**MORE
CLIENT
STORIES**

Read them
on our
website

Aaden's story

Aaden has indefinite leave to remain in the UK after being forced to leave his homeland. He moved into a property but was struggling to manage with the rise in the cost of living with his basic Universal Credit income.

Aaden couldn't afford a cooker and was eating takeaways which was not sustainable on his low income or for his health, as he has been diagnosed with diabetes. He has also been washing

his clothes by hand as he didn't have a washing machine and couldn't afford to use a laundrette. Aaden was referred to us for support by The Zinthyia Trust.

With your help, we have been able to provide Aaden with a new electric cooker and a washing machine so he can now eat more healthily and clean his clothes more easily, helping him to improve his wellbeing and dignity as he settles into his new home.



The Goods Depot

Our social enterprise, based in Glenfield, has been extremely busy fulfilling orders for essential items, including beds, cookers, fridge freezers and washing machines needed for our clients.

The Goods Depot also provides a quality, cost-effective solution for the wider community. Know an organisation that may benefit? Contact the The Goods Depot team to find out more.

Looking for your next challenge? Take on Charity Link's

Leicestershire 3 Peaks Challenge



And help provide essential items
for local people in need.

Sunday 22nd September 2024



www.charity-link.org/leics3peaks



Registered with
FUNDRAISING
REGULATOR

Charity
Link

0116 222 2200